



Data analytics company migrates to cloud with a new team site intranet to boost employee engagement

Business Description

Our client is a leading energy data and intelligence company, known for its asset-light, multi-client business model, and global data collection. Their primary business is to provide data and intelligence to companies and investors active in the energy sector.

Challenge

The client had a classic intranet on SharePoint 2013. Firstly, they wanted to migrate their old system to SharePoint online

Secondly, they wanted to create a modern-looking intranet portal which gave a boost to their employee engagement as well as improved collaboration and document management.

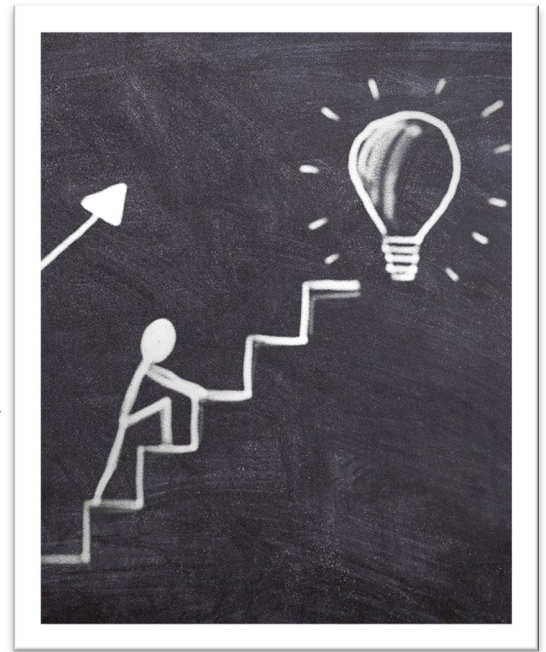
Beyond Intranet's Solution

Beyond Intranet was excited to become a part of their **digital transformation journey** by planning a successful and **seamless migration**. We took a two-way approach: Firstly, we migrated the structure, and secondly, we migrated the functional solution.

- We analyzed the data size and planned to migrate each item one by one. We migrated the content, Listed libraries, and documents from the old site to the new SharePoint online platform without any downtime for the client.
- We used the **Sharegate migration tool** for this process.
- After the content and libraries were successfully migrated, we started working on the **Modern Intranet team site** for them with the gamification functionality.
- **Their Internet home page** had several beautiful web parts for everyone on their team. It came out beautifully as a **highly collaborative and informative corporate intranet page** that had something for every department and every individual.

The Intranet covered a lot of various web parts, some of them can be listed down here as:

- **Yammer activity feeds:** The implementation of Yammer helped the client get their community feeds on to the intranet.
- **Hamr section:** With the integration of Hamr, they have customized this for their employees where they can see a quick glance of their Schedule from Outlook, their emails from the Outlook, Their task from Planner, integration of Social Media account for Facebook and Twitter. This gives the employees a very personal essence on the Intranet.
- **Daily Surveys** to take the poll of employees: This section enables to conduct various surveys and polls.
- **High fives:** This webpart is for praising team members for their achievements on the intranet.
- **Celebration section:** This helps to celebrate any company or individual achievement like new onboarding, new product lunch, project completion news, award section, etc.
- **The Bright star section:** This includes team members that did a great job in a quarter and this can be either an individual or a group.
- **Internal communication section** feeds: This web part helps them create communicational information about the organization, this can be used like a quick news section covering several categories.
- **Market intelligence section:** This section collects market information from several sources.



SharePoint Search this site

Beyondkey Home Documents Pages Offices Test Site contents Edit

Published 8/10/2022 Edit

Highlights

No record found.

People Finder	Apps	Workday	Expense Claims
Policies	Jobs	Training	Branding
Help	Bright Star		

Question of The Weeks

What is Current Weather?

Hot	100%
Windy	0%
Rainy	0%
Cloudy	0%

Suggest Question

Meet The Team

HR Team

Pellentesque elementum ante at eros interdum. Vivamus consetetur diam sed metus Pellentesque elementum

Celebrates

Bright Star - Q1 2022

See who's being recognized for going above and beyond this quarter

View Recipients

High Fives

Ishah Sh... Jun 4, 2021 • Seen by 8

Thanks

Coming Up Next

No upcoming event found

Internal Comms Feed

FACILITIES

places great emphasis on providing accurate and timely information to the market and...

Read More

FACILITIES

These large scale temperature models, built by the industry's largest subsurface data library are designe...

Read More

ESG

Start and End date is Empty TGS leverages core strengths in combining data, AI, and compute...

Read More

ESG

leverages core strengths in combining data, AI, and compute power to allow a unique vantage...

Read More

Market Intelligence

TECH TIP

offers subsurface data, including seismic, magnetic and gravity data, multibeam and coring...

Read More

MARKETING INFO

Explore relationships between global emitters and potential CCS hubs, confusing this with subsurface...

Read More

MARKETING INFO

offers a wide range of energy data to meet the industry where it's at and where it's headed. Our vast...

Read More

LEADERSHIP UPDATES

Our Commitment to Transparency
Commitment to the...

We believe that strong leadership and transparency as our corporate governance is necessary to...

Read More

Conversations

Pinned conversation

Ishah Sh... Jun 4, 2021 • Seen by 7

Great efforts

Ask and Chat

A link to ask and chat
yammer community

The Gauntlet

Ishah Sh... Jun 4, 2021 • Seen by 8

Thanks

Hamr Links

- UAT Link
- Wireframing Tool
- Must Read Link
- New Tech Blog
- How to manage time
- Meditation Steps for focus
- Work Life Balance
- Fashion Villa

Hamr Tasks

- Task from MS Teams
Due Date: Jun 11, 2021
In Progress
- Task from Sharepoint
Due Date: Jun 17, 2021
Not Started
- teams of the week web part
Due Date: Jun 11, 2021
Not Started

Hamr Emails

- Microsoft Power Automate
Wed, Aug 10, 2022 1:24 PM
Test User has changed a shared flow
View the changed flow; New- Express your attend-
When a new response is submitted -> Soft InSight...
- Microsoft Azure
Tue, Aug 9, 2022 11:45 PM
Azure AD Identity Protection Weekly Digest
See your Azure AD Identity Protection Weekly
Digest report Azure AD Identity Protection Week...
- Microsoft Power
Tue, Aug 9, 2022 1:09

Edit

Tools and Technology Used



Sharegate Migration tool



SPFx (SharePoint Framework)



SharePoint Online



Power Automate

Results

- The client experienced a seamless migration from their older SharePoint site to the modern-looking latest cloud version.
- They did not face any downtime with the migration process.
- Employee engagement and collaboration increased by multi-fold due to the new Intranet portal
- They got a Responsive and rich UI for their Modern Team site Intranet.
- Fast loading/response time.
- They are now able to do modifications/enhancements on the new intranet without any technical dependencies.

Rearrange by adding links to BU that have a global impact
Jobs and Branding become hot links
Blog feed should have see more option

Remove link to Community see more option in community feed
Training moved to "Hot Buttons" area

Calendar acts as a page break

All Corporate driven communications on left of page

Combine Community Feed and Local Use @Houston @Woking for local

All Community driven communications on right of page

The screenshot shows the ODIN intranet dashboard. At the top, there are navigation tabs for 'BU Pages' (Facilities, HSE, Compliance, Human Resources) and 'Knowledge Wiki'. A search bar is located on the right. The main content area is divided into several sections:

- HIGHLIGHTS:** A large banner for 'HAVE A QUESTION?' with a 'SUBMIT HERE' button. Below it are smaller tiles for 'People Finder', 'Training', 'Apps', 'Workday', 'Bright Star Nomination', 'Policies', 'Expense Claims', 'Open a Help ticket', and 'Jobs'.
- TEAM OF THE WEEK:** A section featuring 'AME Sales' and 'TGS CELEBRATES' with a photo of a woman and a 'WELCOME TO TGS!' message.
- COMING UP NEXT:** A calendar view for 'MAY 15' showing 'This is the thing that's happening on May 15th'.
- INTERNAL COMMS FEED:** A grid of articles categorized by 'CEO', 'FACILITIES', 'MARKETING INFO', 'LEADERSHIP', 'HUMAN RESOURCES', 'BISTRO', 'TECH TIP', and 'HSE'. Each article includes a thumbnail, title, and a 'Read More' link.
- COMMUNITY FEED:** A section with 'RECENT' and 'POPULAR' tabs, showing posts from users like 'I am fostering 3 kittens this month...' and 'Heading to the pub after hours...'. It includes a 'Go to the Community' link.
- Ask and Chat:** A section with a question mark icon and the text 'Post your questions to a TGS forum to ask your colleagues'.
- THE GAUNTLET:** A section with two challenges: 'Knit for the homeless challenge' and 'Bike don't drive challenge'.
- MY TOOLS:** A footer section with 'MY LINKS' and 'TODAY'S SCHEDULE'.

Callouts are placed around the dashboard to highlight specific features and design changes.