A man wearing a white face mask and a red and black plaid shirt is sitting at a desk in a workshop, working on a laptop. The background shows wooden planks and various tools on a workbench.

How our HR-Directory 365 Helped A Japanese Manufacturing Conglomerate manage and access large data thus saving massive time.

## BUSINESS DESCRIPTION

Our client is a Japanese multinational company that specializes in dental care, health and beauty, chemicals, and motorcycle parts. They have affiliates in 29 countries and more than 3,000 internal users of their existing HR directory all over the world.

## CHALLENGES

The massive amount of data that the Japanese manufacturing giant maintained was the source of most of their issues.



They were facing load time challenges as a result of their massive database.



In addition to this, the procedure of excluding inactive accounts or guest accounts was a challenging one for them.



Also, it was a little bit difficult and time taking process to check/find a person from the same location as they have to filter it so they just want users to view and access data from their based location.

## SOLUTION

Central systems have always been presented to businesses as another scenario where the phrase “if you have it, you’re sorted” was projected. Basically, if you have a central system, your management and accessibility issues are resolved. But we know it’s not true. Not now nor it was ever. The real approach is implementing a central system correctly that syncs perfectly with your business data to deliver what you need- Ease of access and Simplicity.




### To achieve this very goal, here is what we did:

- The first thing we did was recommend the client to integrate the [HR Directory 365](#). Reason? The HR Directory 365 was developed to have the capacity to store a large amount of data while maintaining a rapid load time for that data and reflecting quickly.
- We ensured the difficulty in exclusion was made easier with the customized options we provided in the Settings.
- We even helped them create 29 SharePoint sites for 29 locations under a single tenant
- The most interesting part about the HR Directory 365 is that it is SPFX. So they just needed to update on a single tenant app catalog site and it automatically updated on all other 29 sites for 29 locations.

## TESTIMONIAL

★★★★★

Fri, May 27, 2022

 Dejan Eric

AppSource review

### Easy to configure and powerful

Support team is great and constantly keeping the application updated and secured. It has all the employee directory features that a company needs. I recommend it!

## RESULTS

- Our solutions enabled the client to exclude the former/inactive/guest accounts with a couple of clicks.
- With our global filter feature, they were able to set viewing access for users as per their based location.
- Because the client was able to handle large sets of data with ease, they could save a lot of time.



## TECHNOLOGY STACK



Implementing cache memory to fetch information in less time.



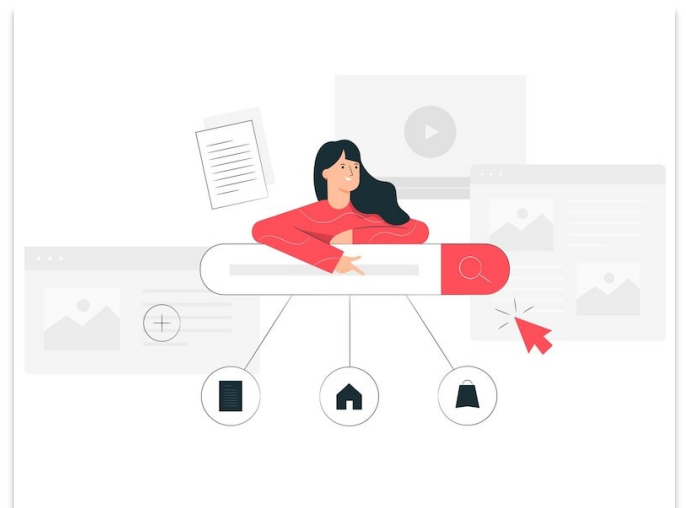
Built on SharePoint Framework and React JS

## CONCLUSION

To enable ease of management and accessibility of data, businesses need to accommodate a premium, yet a relevant central system that understands what you need exactly.

Smart filter and advanced search are also features that your central system must offer for quick data filtering as you require.

Beyond Intranet has combined all of these elements using their HR Directory 365 to help many businesses across all sectors.



# SCREENSHOTS

The screenshot displays the HR Directory 365 interface. At the top, there is a search bar and filters for 'Select Department' and 'Select Job Title'. A navigation bar contains a grid of icons for various functions. The main area shows a grid of employee profiles, each with a profile picture, name, and a list of details including email, phone number, and department. The profiles are arranged in two rows of nine columns each. The total number of employees is indicated as '#Employee(s) 20'.

The screenshot shows the 'Exclude Options' configuration page in HR Directory 365. The page has a sidebar with navigation options: 'General', 'Exclude Options' (selected), 'Global Filters', 'About Me Settings', and 'Custom View Settings'. The main content area includes several filter settings:

- Exclude Options:** Two toggle switches for 'Exclude Deactivated Users' (checked) and 'Exclude Guest Users' (unchecked).
- Exclude Empty Values:** A dropdown menu for 'Name'.
- Office Location(s):** A dropdown menu.
- Exclude Domain:** A dropdown menu.
- Department(s):** A dropdown menu.
- Job Title(s):** A dropdown menu.
- Name(s):** A dropdown menu with the value 'Thomas Sarah, Johanna Lorenz' selected.

At the bottom of the settings area are 'Submit' and 'Reset' buttons.

Filter Your Data Quickly with HR Directory 365

Book Demo

A  beyondkey™ Company